



UC San Diego

3333 - 10350

N Torrey Pines Ct

LINK | *Torrey Pines*

UC San Diego Innovation Hub

LinkTorreyPines.com



ALTOS

Calibr



SYNTHETIC GENOMICS®

SORRENTO VALLEY

GOLF COURSE

N TORREY PINES ROAD

Scripps Research

SBP

© Johnson & Johnson

SBP

VERTEX

Scripps Research

TORREY PINES

LINK

Torrey Pines

UC San Diego Innovation Hub

Scripps Research

Gary & Mary

West Wireless Health Institute™

conKwest

astellas

GENERAL ATOMICS

LabCorp

PACIRA
PHARMACEUTICALS, INC.

PACIRA
PHARMACEUTICALS, INC.

ThermoFisher
SCIENTIFIC

GENESEE AVENUE



SALK INSTITUTE
FOR BIOLOGICAL STUDIES

UC San Diego



Click here to take flight and see the unmatched views that **LINK** has to offer

3344

3366

3377

10350

3333

LINK TODAY WITH YESTERDAY

Perched above the Pacific Ocean and nestled along the 10th hole of the Torrey Pines Golf Course, Link boasts panoramic views, awe-inspiring sunsets and cool ocean breezes. Come be a part of this community rich with history, overlooking a famous course built on the site of Camp Callan, a U.S. Army installation during World War II.



Campus Amenities

On campus without ever needing to leave. Enjoy our gym, shower and lockers, impromptu gathering spaces, and incredible views overlooking the Torrey Pines Golf Course and ocean.

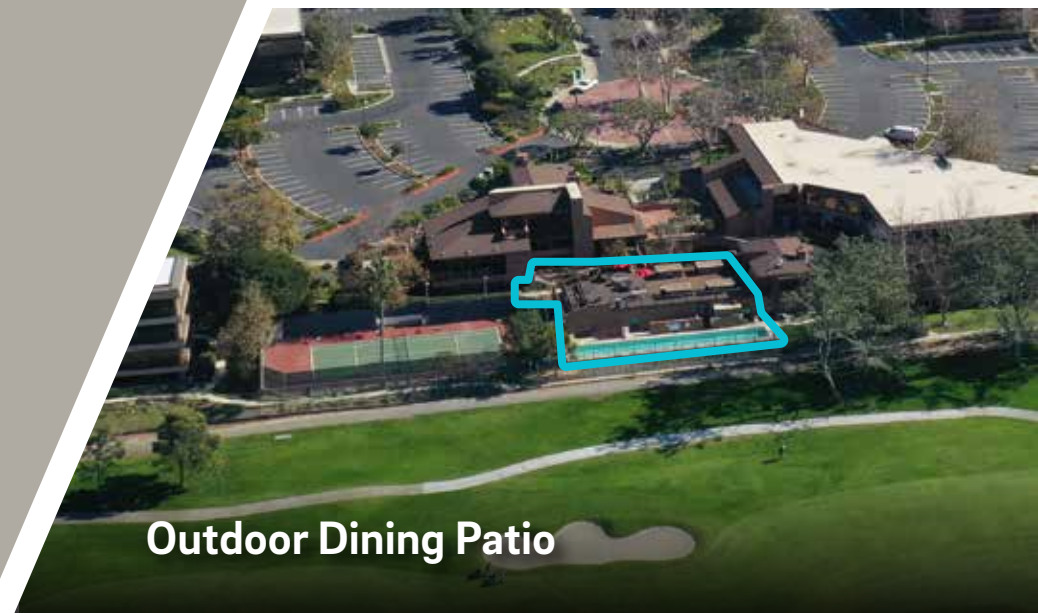
Golf, hike, surf, paddle, run and glide... We offer the quickest access to San Diego's best outdoor activities without wasting extra time.



Outdoor Seating



Fitness Center + Showers & Lockers



Outdoor Dining Patio



Weekly Food Trucks

Nearby Dining Options within ± 5 -minute drive

Greenfinch | Mustangs and Burros

Cliff Hanger Cafe

Bella Vista Social Club

LINK Torrey Pines
UC San Diego Innovation Hub

The Grill at Torrey Pines

The Bistro at The Strand

Cafe Ventanas

The Farmer & The Sea Horse

Joya Kitchen





LINK TO CHANGE

Are you looking for concrete floors, expansive window lines and modern finishes? Link will change the way you work with just the right workspace.

Availability Summary

Building - Suite	RSF	Details
3366 - Suite 140	1,722	3 offices, conference room, break area, reception, IT/server room.
3366 - Suite 250	2,153	Available February 2025. Reception area, 4 offices, 3 conference/huddle rooms, break room.
3366 - Suite 316/318	1,800	4 offices, copy/print room and break room. Can be combined with Suite 320 for 2,792 sf.
3366 - Suite 320	992	2 offices, conference room, copy/print room and break room. Can be combined with Suite 316/318 for 2,792 sf.
3377 - Suite 150	9,095	Shell space. Direct entry from building exterior. Potential creative space with ocean views.

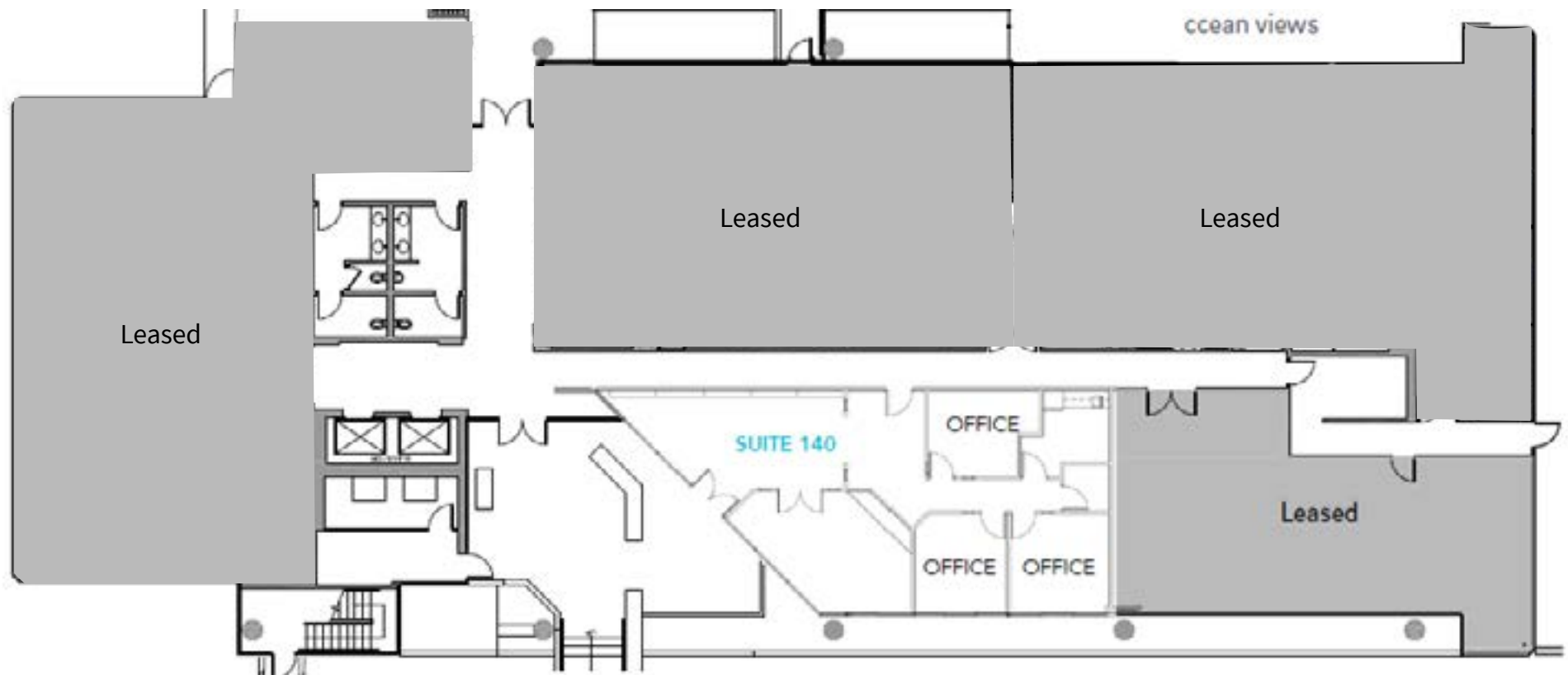
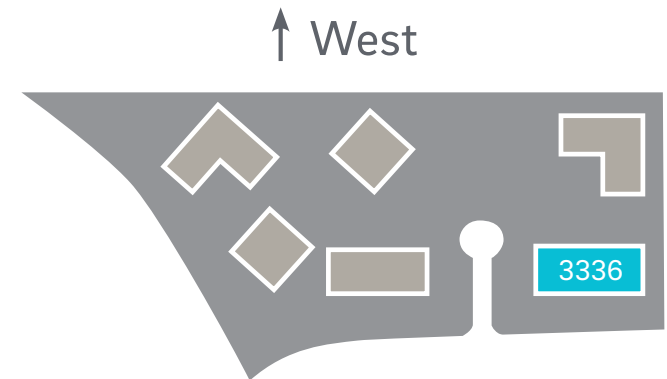
 [Take a Virtual Tour - Fitness Center](#)



3366 N. Torrey Pines Court | **Existing floor plan** Suite 140 - 1,722 sf | available now

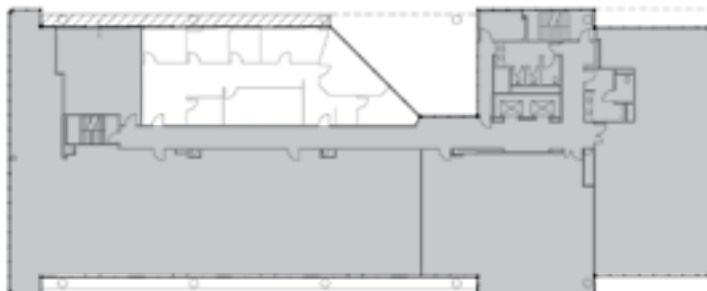
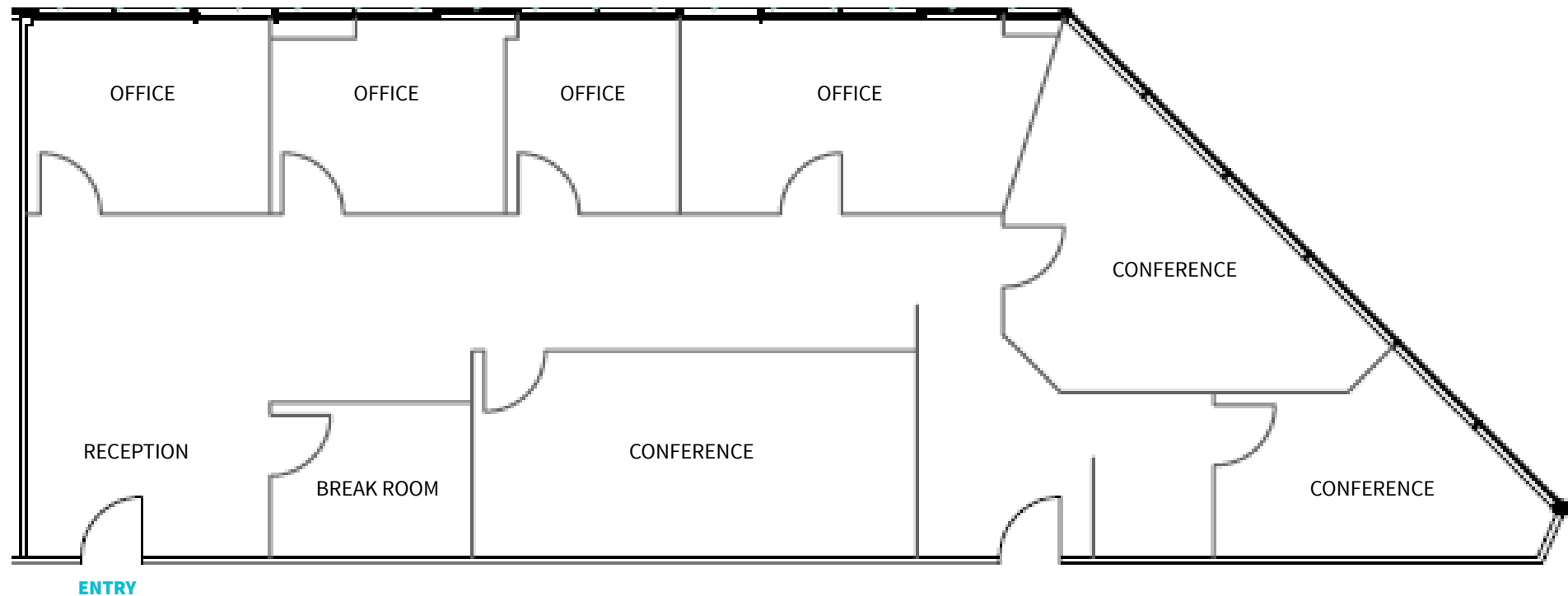
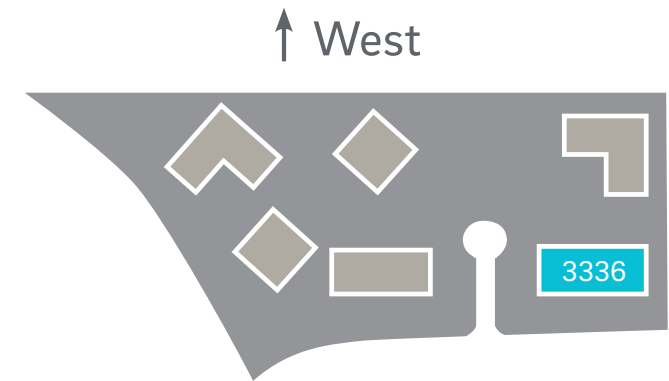
- Reception
- 3 Offices
- Conference room
- Break area
- IT/server room

 [Take a Virtual Tour - 3366 #140](#)



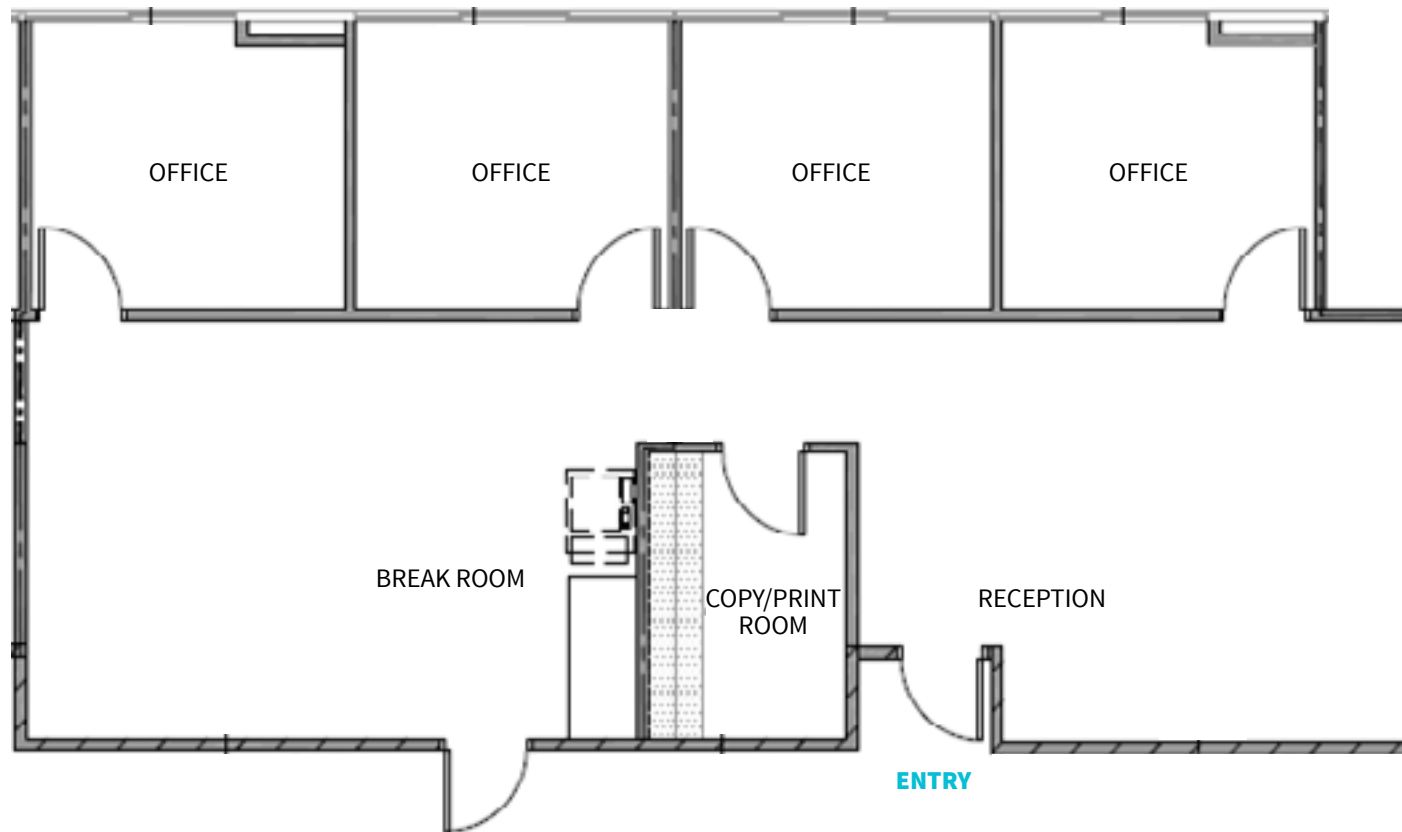
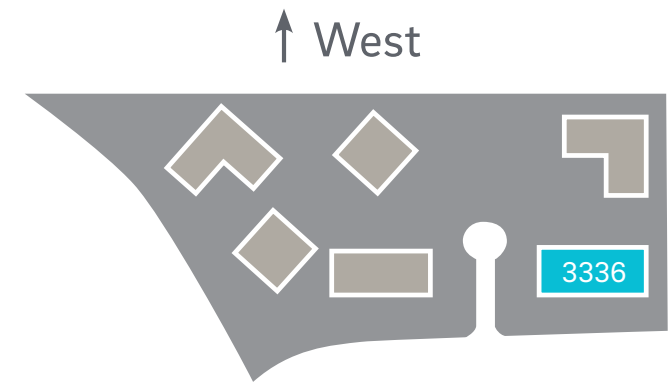
3366 N. Torrey Pines Court
Suite 250 - 2,153 sf | available February 2025

- Reception
- 4 Offices
- 3 Conference rooms
- Break room

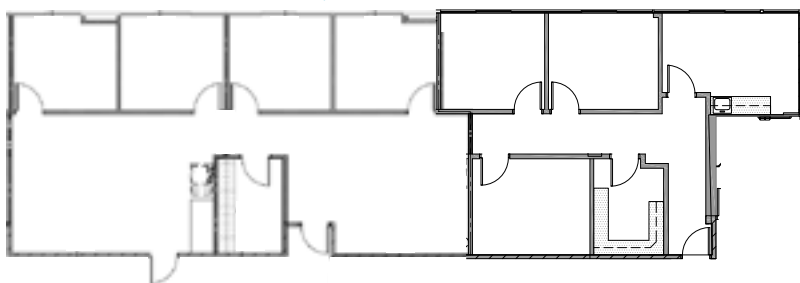


3366 N. Torrey Pines Court
Suite 316/318 - 1,800 sf | available now
(can be combined with Suite 320 for 2,792 sf)

- 4 offices
- Copy/print room
- Breakroom

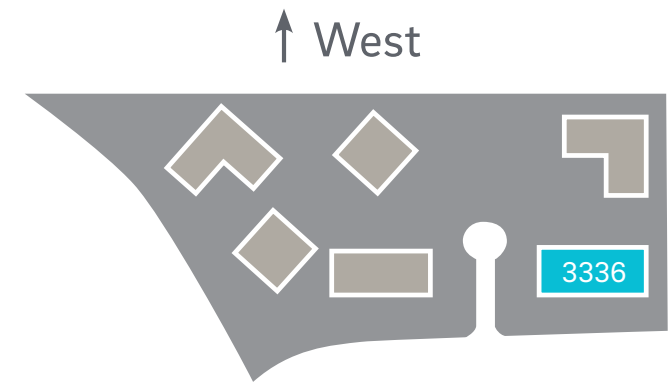


Suites combined for $\pm 2,800$ sf

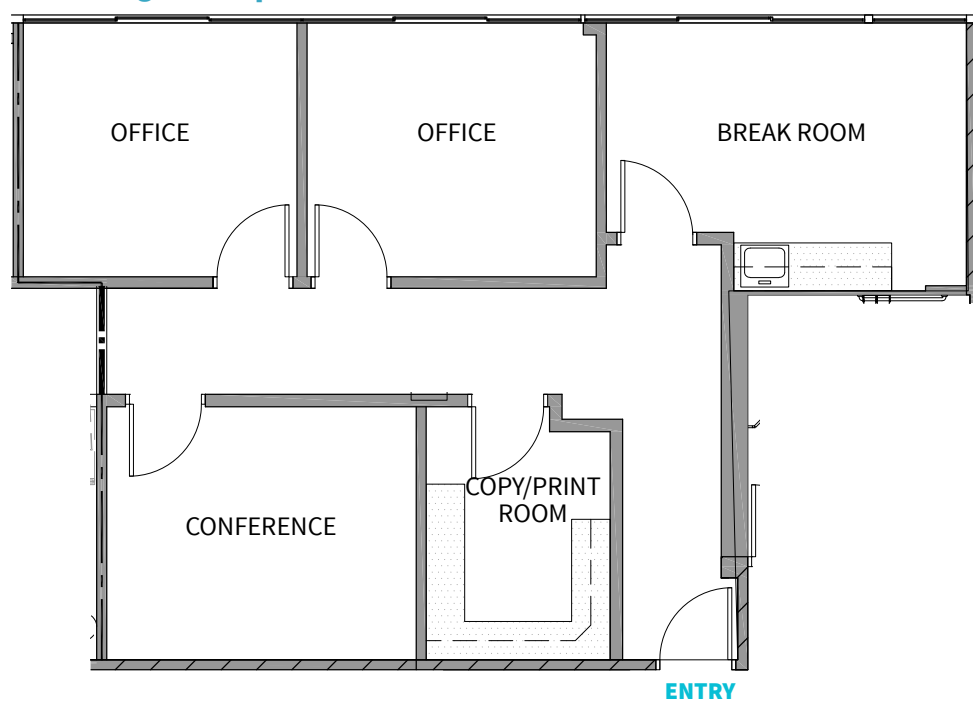


3366 N. Torrey Pines Court
Suite 320 - 992 sf | available now
(can be combined with Suite 316/318 for 2,792 sf)

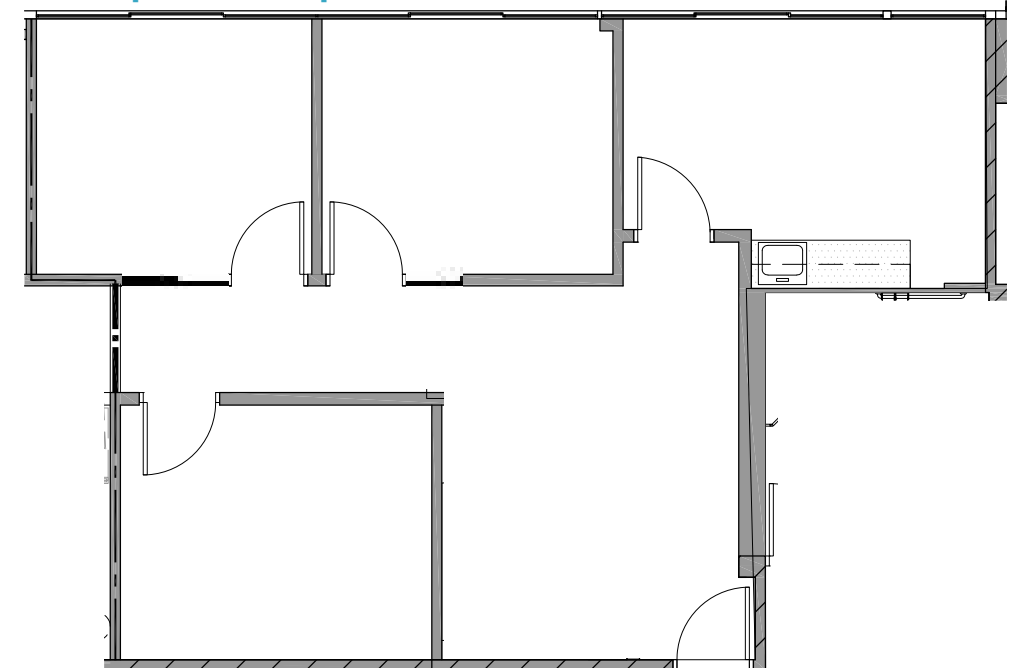
- 2 offices
- Conference room
- Copy/print room
- Breakroom



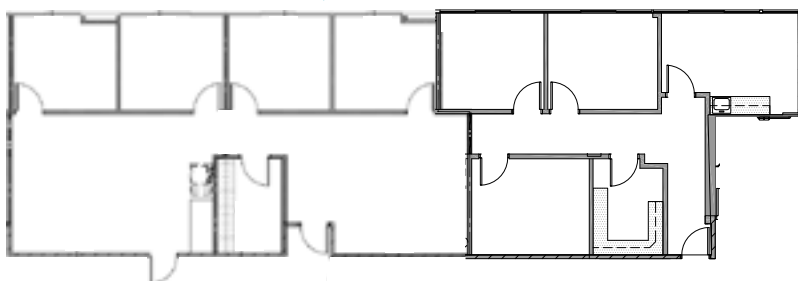
Existing floor plan



Conceptual floor plan



Suites combined for ± 2,800 sf





3377

N. TORREY PINES COURT



Center for
Creative Leadership

3377 N. Torrey Pines Court | **Existing floor plan**

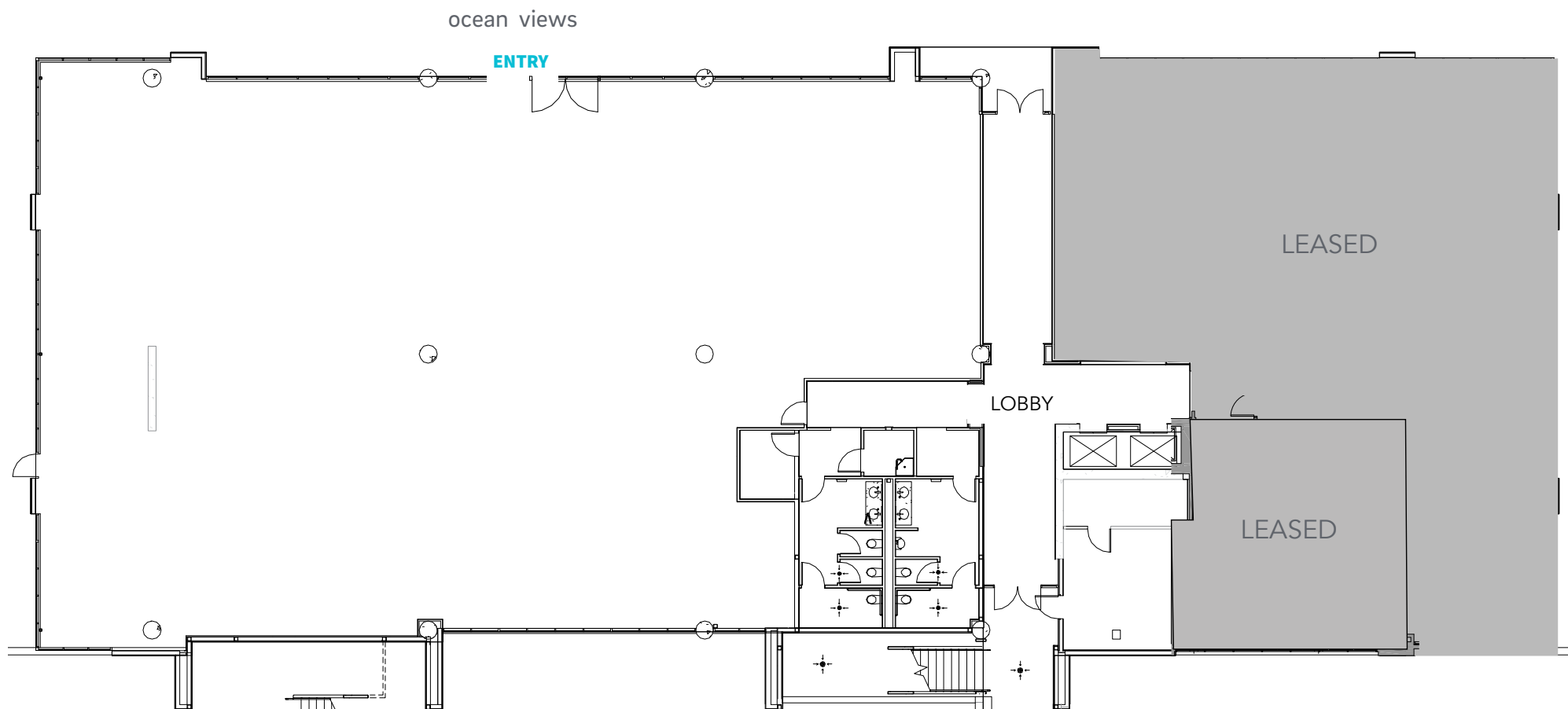
Suite 150 - 9,095 sf | available now

- Shell Condition - potential creative space
- Direct entry from building exterior
- Ocean views

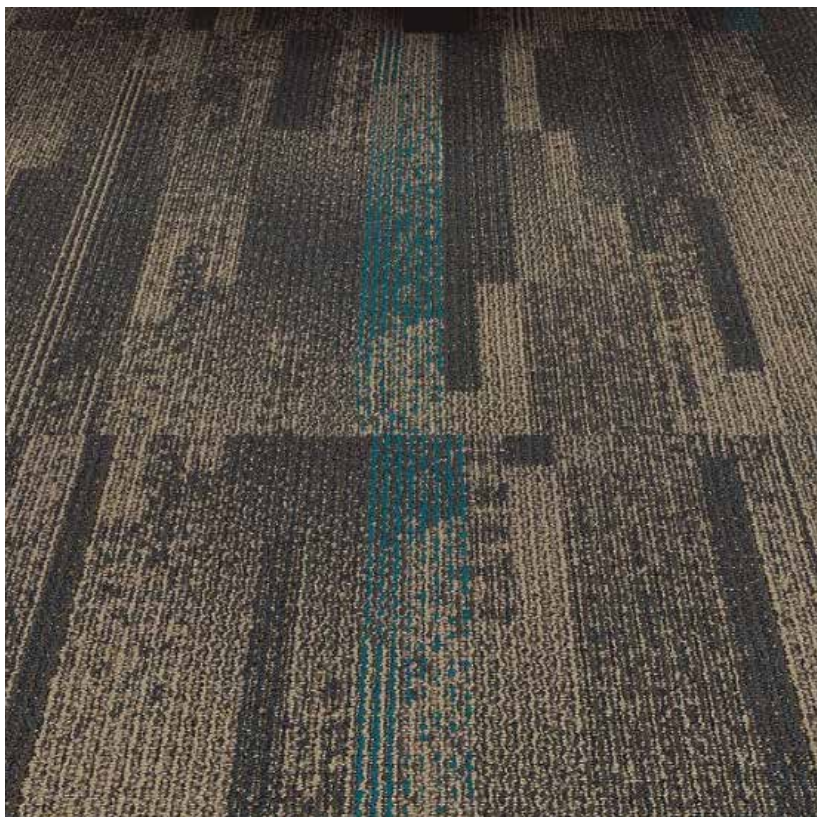


[Take a Virtual Tour - 3377 #150](#)

↑ West



Spec Suite Finishes



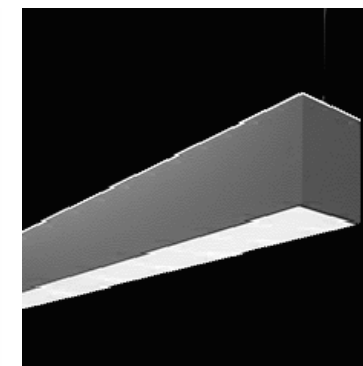
CARPET



ENTRY CHANDELIER



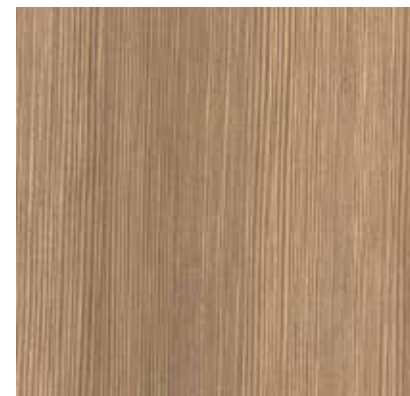
ISLAND PENDANT



GENERAL LIGHTING



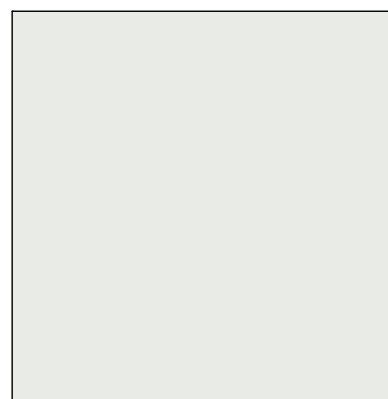
SOLID SUFACE COUNTERTOP



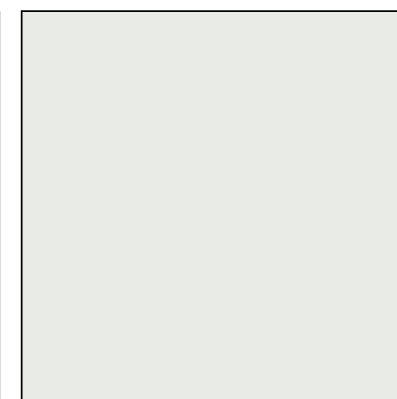
MILLWORK LAMINATE



TILE BACKSPLASH



FIELD PAINT



WALL BASE



Tim Olson
858.410.1253
tim.olson@jll.com
RE lic. #01364117

Greg Moore
858.410.6367
greg.moore@jll.com
RE lic. #02068852

Although information has been obtained from sources deemed reliable, neither Owner nor JLL makes any guarantees, warranties or representations, express or implied, as to the completeness or accuracy as to the information contained herein. Any projections, opinions, assumptions or estimates used are for example only. There may be differences between projected and actual results, and those differences may be material. The Property may be withdrawn without notice. Neither Owner nor JLL accepts any liability for any loss or damage suffered by any party resulting from reliance on this information. If the recipient of this information has signed a confidentiality agreement regarding this matter, this information is subject to the terms of that agreement. ©2024.Jones Lang LaSalle IP, Inc. All rights reserved.